



# Ub rabbit pAb

Cat No.:ES4162

For research use only

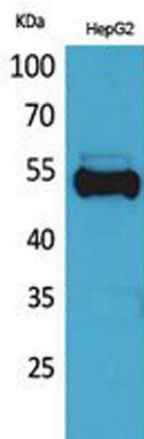
## Overview

<b>Product Name</b>	Ub rabbit pAb
<b>Host species</b>	Rabbit
<b>Applications</b>	WB;ELISA
<b>Species Cross-Reactivity</b>	Human;Mouse;Rat
<b>Recommended dilutions</b>	Western Blot: 1/500 - 1/2000. ELISA: 1/20000. Not yet tested in other applications.
<b>Immunogen</b>	Synthesized peptide derived from human Ub around the non-acetylation site of K63.
<b>Specificity</b>	Ub Polyclonal Antibody detects endogenous levels of Ub protein only when acetylation at K63.
<b>Formulation</b>	Liquid in PBS containing 50% glycerol, 0.5% BSA and 0.02% sodium azide.
<b>Storage</b>	Store at -20°C. Avoid repeated freeze-thaw cycles.
<b>Protein Name</b>	Ubiquitin
<b>Gene Name</b>	UBA52/RPS27A/UBB/UBC
<b>Cellular localization</b>	[Ubiquitin]: Cytoplasm . Nucleus .; [60S ribosomal protein L40]: Cytoplasm .
<b>Purification</b>	The antibody was affinity-purified from rabbit antiserum by affinity-chromatography using epitope-specific immunogen.
<b>Clonality</b>	Polyclonal
<b>Concentration</b>	1 mg/ml
<b>Observed band</b>	52kD
<b>Human Gene ID</b>	
<b>Human Swiss-Prot Number</b>	P62987/P62979/P0CG47/P0CG48
<b>Alternative Names</b>	UBB; Polyubiquitin-B; UBC; Polyubiquitin-C; RPS27A; UBA80; UBCEP1; Ubiquitin-40S ribosomal protein S27a; Ubiquitin carboxyl extension protein 80; UBA52; UBCEP2Ubiquitin-60S ribosomal protein L40; CEP52; Ubiquitin A-52 residue ribosomal protein fusion prod
<b>Background</b>	Ubiquitin is a highly conserved nuclear and cytoplasmic protein that has a major role in





targeting cellular proteins for degradation by the 26S proteasome. It is also involved in the maintenance of chromatin structure, the regulation of gene expression, and the stress response. Ubiquitin is synthesized as a precursor protein consisting of either polyubiquitin chains or a single ubiquitin moiety fused to an unrelated protein. This gene encodes a fusion protein consisting of ubiquitin at the N terminus and ribosomal protein L40 at the C terminus, a C-terminal extension protein (CEP). Multiple processed pseudogenes derived from this gene are present in the genome. [provided by RefSeq, Jul 2008],



Western Blot analysis of HepG2 cells using Ub Polyclonal Antibody. Secondary antibody(catalog#:RS0002) was diluted at 1:20000

