



RIN3 rabbit pAb

Cat No.:ES3381

For research use only

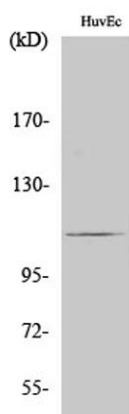
Overview

Product Name	RIN3 rabbit pAb
Host species	Rabbit
Applications	WB;ELISA;IHC
Species Cross-Reactivity	Human;Rat;Mouse;
Recommended dilutions	WB 1:500-2000;IHC-p 1:50-300; ELISA 2000-20000
Immunogen	The antiserum was produced against synthesized peptide derived from human RIN3. AA range:391-440
Specificity	RIN3 Polyclonal Antibody detects endogenous levels of RIN3 protein.
Formulation	Liquid in PBS containing 50% glycerol, 0.5% BSA and 0.02% sodium azide.
Storage	Store at -20°C. Avoid repeated freeze-thaw cycles.
Protein Name	Ras and Rab interactor 3
Gene Name	RIN3
Cellular localization	Cytoplasm . Cytoplasmic vesicle . Early endosome . Activation of tyrosine phosphorylation signaling induces translocation to cytoplasmic vesicles. .
Purification	The antibody was affinity-purified from rabbit antiserum by affinity-chromatography using epitope-specific immunogen.
Clonality	Polyclonal
Concentration	1 mg/ml
Observed band	107kD
Human Gene ID	79890
Human Swiss-Prot Number	Q8TB24
Alternative Names	RIN3; Ras and Rab interactor 3; Ras interaction/interference protein 3
Background	Summary: This protein encoded by this gene is a member of the RIN family of Ras interaction-interference proteins, which are binding partners to the RAB5 small GTPases. The protein functions as a guanine nucleotide exchange for

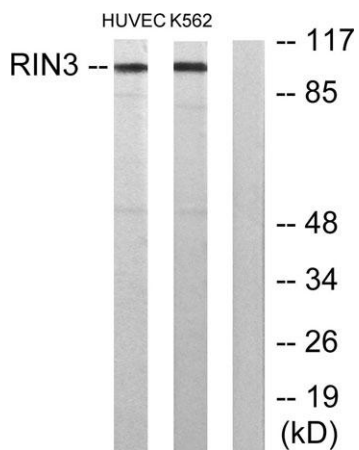




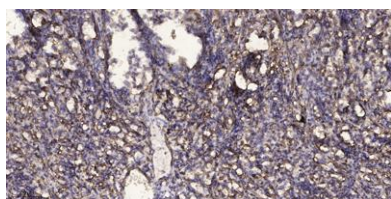
RAB5B and RAB31. Alternative splicing results in multiple transcript variants. [provided by RefSeq, Feb 2016],



Western Blot analysis of various cells using RIN3 Polyclonal Antibody



Western blot analysis of lysates from HUVEC and K562 cells, using RIN3 Antibody. The lane on the right is blocked with the synthesized peptide.



Immunohistochemical analysis of paraffin-embedded human Squamous cell carcinoma of lung. 1, Antibody was diluted at 1:200(4° overnight). 2, Tris-EDTA,pH9.0 was used for antigen retrieval. 3,Secondary antibody was diluted at 1:200(room temperature, 45min).

