

HEN1/2 rabbit pAb

Cat No.:ES2509

For research use only

Overview

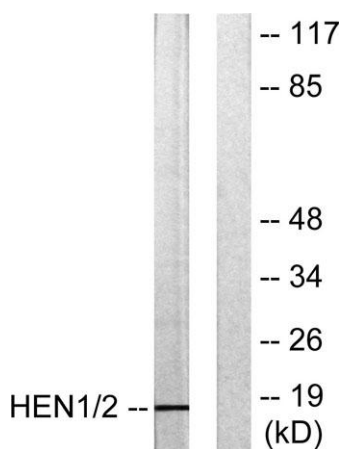
| | |
|--------------------------|---|
| Product Name | HEN1/2 rabbit pAb |
| Host species | Rabbit |
| Applications | WB;IHC;IF;ELISA |
| Species Cross-Reactivity | Human;Mouse |
| Recommended dilutions | Western Blot: 1/500 - 1/2000. Immunohistochemistry: 1/100 - 1/300. ELISA: 1/10000. Not yet tested in other applications. |
| Immunogen | The antiserum was produced against synthesized peptide derived from human HEN1/2. AA range:41-90 |
| Specificity | HEN1/2 Polyclonal Antibody detects endogenous levels of HEN1/2 protein. |
| Formulation | Liquid in PBS containing 50% glycerol, 0.5% BSA and 0.02% sodium azide. |
| Storage | Store at -20°C. Avoid repeated freeze-thaw cycles. |
| Protein Name | Helix-loop-helix protein 1 |
| Gene Name | HEN1/HEN2 |
| Cellular localization | Nucleus . |
| Purification | The antibody was affinity-purified from rabbit antiserum by affinity-chromatography using epitope-specific immunogen. |
| Clonality | Polyclonal |
| Concentration | 1 mg/ml |
| Observed band | 19kD |
| Human Gene ID | 4807/4808 |
| Human Swiss-Prot Number | Q02575/Q02577 |
| Alternative Names | NHLH1; BHLHA35; HEN1; Helix-loop-helix protein 1; HEN-1; Class A basic helix-loop-helix protein 35; bHLHA35; Nescient helix loop helix 1; NSCL-1; NHLH2; BHLHA34; HEN2; KIAA0490; Helix-loop-helix protein 2; HEN-2; Class A basic helix-loop-helix protein 2 |
| Background | The helix-loop-helix (HLH) proteins are a family of putative transcription factors, some of which have |



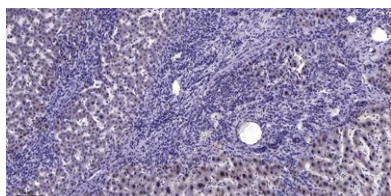
been shown to play an important role in growth and development of a wide variety of tissues and species. Four members of this family have been clearly implicated in tumorigenesis via their involvement in chromosomal translocations in lymphoid tumors: MYC (MIM 190080), LYL1 (MIM 151440), E2A (MIM 147141), and SCL (MIM 187040).[supplied by OMIM, Nov 2002],



Western Blot analysis of various cells using HEN1/2 Polyclonal Antibody diluted at 1:1000 cells nucleus extracted by Minute TM Cytoplasmic and Nuclear Fractionation kit (SC-003, Invent biotech, MN, USA).



Western blot analysis of lysates from Jurkat cells, using HEN1/2 Antibody. The lane on the right is blocked with the synthesized peptide.



Immunohistochemical analysis of paraffin-embedded human liver cancer. 1, Antibody was diluted at 1:200(4° overnight). 2, Tris-EDTA, pH9.0 was used for antigen retrieval. 3, Secondary antibody was diluted at 1:200(room temperature, 45min).

