



EF-1 γ rabbit pAb

Cat No.:ES2229

For research use only

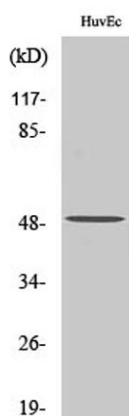
Overview

Product Name	EF-1 γ rabbit pAb
Host species	Rabbit
Applications	WB;ELISA
Species Cross-Reactivity	Human;Mouse;Rat
Recommended dilutions	Western Blot: 1/500 - 1/2000. ELISA: 1/20000. Not yet tested in other applications.
Immunogen	The antiserum was produced against synthesized peptide derived from human EEF1G. AA range:101-150
Specificity	EF-1 γ Polyclonal Antibody detects endogenous levels of EF-1 γ protein.
Formulation	Liquid in PBS containing 50% glycerol, 0.5% BSA and 0.02% sodium azide.
Storage	Store at -20°C. Avoid repeated freeze-thaw cycles.
Protein Name	Elongation factor 1-gamma
Gene Name	EEF1G
Cellular localization	nucleus,cytoplasm,endoplasmic reticulum,cytosol,cell-cell adherens junction,membrane,extracellular exosome,
Purification	The antibody was affinity-purified from rabbit antiserum by affinity-chromatography using epitope-specific immunogen.
Clonality	Polyclonal
Concentration	1 mg/ml
Observed band	55kD
Human Gene ID	1937
Human Swiss-Prot Number	P26641
Alternative Names	EEF1G; EF1G; Elongation factor 1-gamma; EF-1-gamma; eEF-1B gamma
Background	eukaryotic translation elongation factor 1 gamma(EEF1G) Homo sapiens This gene encodes a subunit of the elongation factor-1 complex, which is responsible for the enzymatic

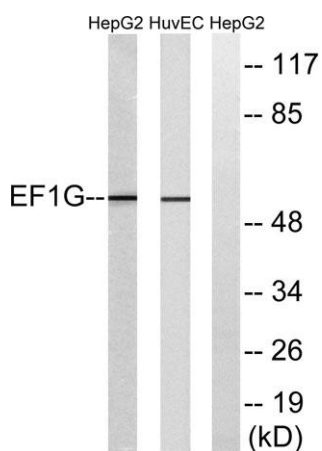




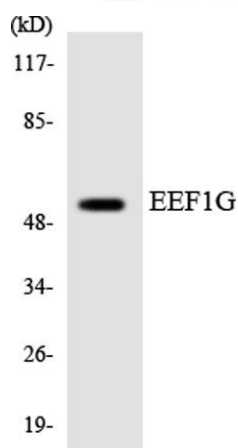
delivery of aminoacyl tRNAs to the ribosome. This subunit contains an N-terminal glutathione transferase domain, which may be involved in regulating the assembly of multisubunit complexes containing this elongation factor and aminoacyl-tRNA synthetases. [provided by RefSeq, Jul 2008],



Western Blot analysis of various cells using EF-1 γ Polyclonal Antibody diluted at 1:1000



Western blot analysis of lysates from HUVEC and HepG2 cells, using EEF1G Antibody. The lane on the right is blocked with the synthesized peptide.



Western blot analysis of the lysates from HepG2 cells using EEF1G antibody.

