



# Crk-L (phospho Tyr207) rabbit pAb

Cat No.:ES1517

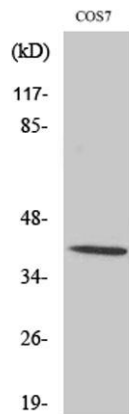
For research use only

## Overview

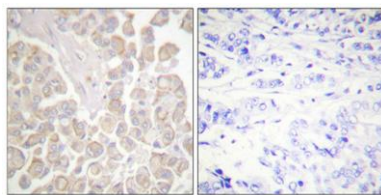
|                          |  |
|--------------------------|--|
| Product Name             | Crk-L (phospho Tyr207) rabbit pAb  |
| Host species             | Rabbit   |
| Applications             | WB;IHC;IF;ELISA  |
| Species Cross-Reactivity | Human;Mouse;Rat;Monkey   |
| Recommended dilutions    | Western Blot: 1/500 - 1/2000.<br>Immunohistochemistry: 1/100 - 1/300.<br>Immunofluorescence: 1/200 - 1/1000. ELISA:<br>1/5000. Not yet tested in other applications. |
| Immunogen                | The antiserum was produced against synthesized peptide derived from human CrkL around the phosphorylation site of Tyr207. AA range:173-222                           |
| Specificity              | Phospho-Crk-L (Y207) Polyclonal Antibody detects endogenous levels of Crk-L protein only when phosphorylated at Y207.  |
| Formulation              | Liquid in PBS containing 50% glycerol, 0.5% BSA and 0.02% sodium azide.  |
| Storage                  | Store at -20°C. Avoid repeated freeze-thaw cycles.   |
| Protein Name             | Crk-like protein   |
| Gene Name                | CRKL   |
| Cellular localization    | endosome,cytosol,cell-cell adherens junction,extracellular exosome,  |
| Purification             | The antibody was affinity-purified from rabbit antiserum by affinity-chromatography using epitope-specific immunogen.  |
| Clonality                | Polyclonal   |
| Concentration            | 1 mg/ml  |
| Observed band            | 39kD   |
| Human Gene ID            | 1399   |
| Human Swiss-Prot Number  | P46109   |
| Alternative Names        | CRKL; Crk-like protein   |
| Background               | This gene encodes a protein kinase containing SH2 and SH3 (src homology) domains which has been shown to activate the RAS and JUN kinase signaling                   |



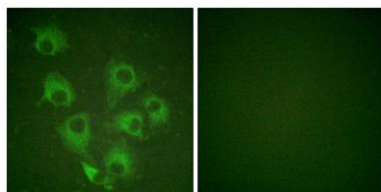
pathways and transform fibroblasts in a RAS-dependent fashion. It is a substrate of the BCR-ABL tyrosine kinase, plays a role in fibroblast transformation by BCR-ABL, and may be oncogenic.[provided by RefSeq, Jan 2009],



Western Blot analysis of various cells using Phospho-Crk-L (Y207) Polyclonal Antibody



Immunohistochemical analysis of paraffin-embedded Human breast cancer. Antibody was diluted at 1:100(4° overnight). High-pressure and temperature Tris-EDTA,pH8.0 was used for antigen retrieval. Negative contrl (right) obtained from antibody was pre-absorbed by immunogen peptide.



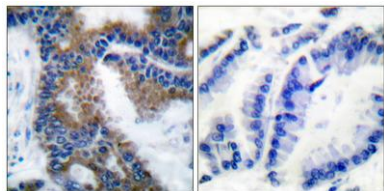
Immunofluorescence analysis of HUVEC cells, using CrkL (Phospho-Tyr207) Antibody. The picture on the right is blocked with the phospho peptide.





**ELK Biotechnology**

Immunohistochemistry analysis of paraffin-embedded human lung carcinoma, using CrkL (Phospho-Tyr207) Antibody. The picture on the right is blocked with the phospho peptide.



+86-27-59760950

[ELKbio@ELKbiotech.com](mailto:ELKbio@ELKbiotech.com)

[www.elkbiotech.com](http://www.elkbiotech.com)

23-2, No.388 Gaoxin 2nd Road, Wuhan East Lake Hi-tech Development Zone, Hubei, P.R.C.