

GSK3 α (phospho Ser21) rabbit pAb

Cat No.:ES1320

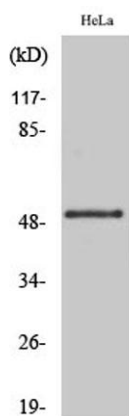
For research use only

Overview

Product Name	GSK3 α (phospho Ser21) rabbit pAb
Host species	Rabbit
Applications	WB;IHC;IF;IP;ELISA
Species Cross-Reactivity	Human;Mouse;Rat
Recommended dilutions	Western Blot: 1/500 - 1/2000. Immunohistochemistry: 1/100 - 1/300. Immunoprecipitation: 2-5 ug/mg lysate. ELISA: 1/20000. Not yet tested in other applications.
Immunogen	The antiserum was produced against synthesized peptide derived from human GSK3 alpha around the phosphorylation site of Ser21. AA range:10-59
Specificity	Phospho-GSK3 α (S21) Polyclonal Antibody detects endogenous levels of GSK3 α protein only when phosphorylated at S21.
Formulation	Liquid in PBS containing 50% glycerol, 0.5% BSA and 0.02% sodium azide.
Storage	Store at -20°C. Avoid repeated freeze-thaw cycles.
Protein Name	Glycogen synthase kinase-3 alpha
Gene Name	GSK3A
Cellular localization	mitochondrion,cytosol,beta-catenin destruction complex,postsynapse,
Purification	The antibody was affinity-purified from rabbit antiserum by affinity-chromatography using epitope-specific immunogen.
Clonality	Polyclonal
Concentration	1 mg/ml
Observed band	55kD
Human Gene ID	2931
Human Swiss-Prot Number	P49840
Alternative Names	GSK3A; Glycogen synthase kinase-3 alpha; GSK-3 alpha; Serine/threonine-protein kinase GSK3A
Background	glycogen synthase kinase 3 alpha(GSK3A) Homo sapiens This gene encodes a multifunctional

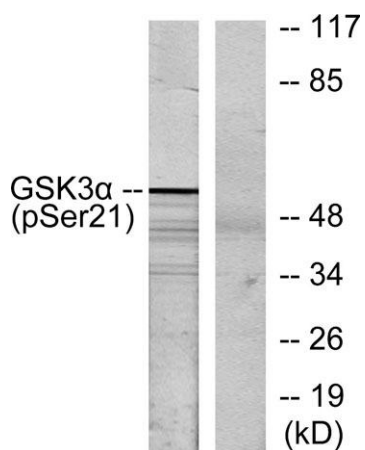
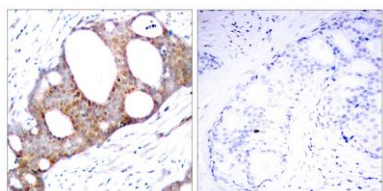


Ser/Thr protein kinase that is implicated in the control of several regulatory proteins including glycogen synthase, and transcription factors, such as JUN. It also plays a role in the WNT and PI3K signaling pathways, as well as regulates the production of beta-amyloid peptides associated with Alzheimer's disease. [provided by RefSeq, Oct 2011],



Western Blot analysis of various cells using Phospho-GSK3 α (S21) Polyclonal Antibody

Immunohistochemistry analysis of paraffin-embedded human breast carcinoma, using GSK3 α (Phospho-Ser21) Antibody. The picture on the right is blocked with the phospho peptide.



Western blot analysis of lysates from ovary cancer, using GSK3 α (Phospho-Ser21) Antibody. The lane on the right is blocked with the phospho peptide.

