



# ELK Biotechnology

NBR1 Rabbit pAb

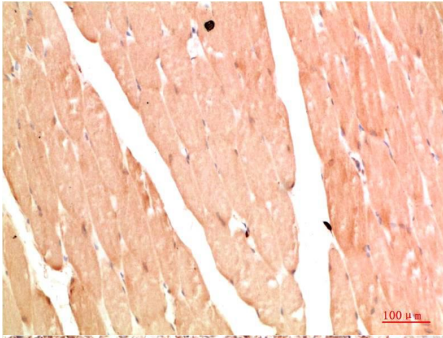
Catalog NO.: EA357

For research use only.

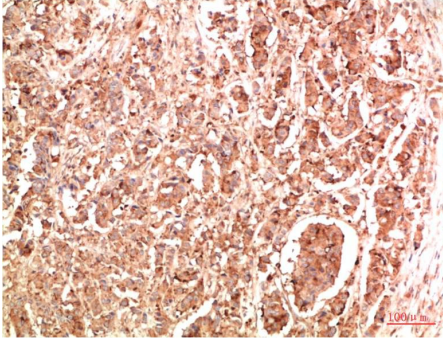
## Overview

---

Product name	NBR1 Rabbit polyclonal antibody
Source	Rabbit
Applications	IHC
Species reactivity	Human, Mouse, Rat
Recommended dilutions	Immunohistochemistry:1/100-200 <b>NOTE: Optimal dilutions should be determined by the end user.</b>
Immunogen	Recombinant Protein
Species	Human
Storage	PBS with 0.02% sodium azide and 50% glycerol pH 7.4. Store at -20° C. Avoid repeated freeze-thaw cycles.
Isotype	IgG
Clonality	Polyclonal
Concentration	1 mg/ml
Observed band	<b>120kDa</b>
GeneID (Human)	4077
Human Swiss-Prot No.	Q14596
Cellular localization	Cytoplasm, Cytoplasmic vesicle, Lysosome
Alternative Names	1A13B, MIG19, Nbr1
Background	NBR1 protein is known for its encoding gene proximity to the BRCA1 tumor suppressor gene. N-terminal Phox and Bem1p (PB1) domains of NBR1 mediate its interaction with muscle specific titin kinase and scaffolding protein p62. NBR1 plays a role in autophagy by facilitating the autophagosomal degradation of ubiquitinated proteins independently and also in concert with p62.



Immunohistochemical analysis of paraffin-embedded Human Skeletal Muscle Tissue using NBR1 (EA357) Rabbit pAb diluted at 1:200.



Immunohistochemical analysis of paraffin-embedded Human Breast Carcinoma Tissue using NBR1 (EA357) Rabbit pAb diluted at 1:200.